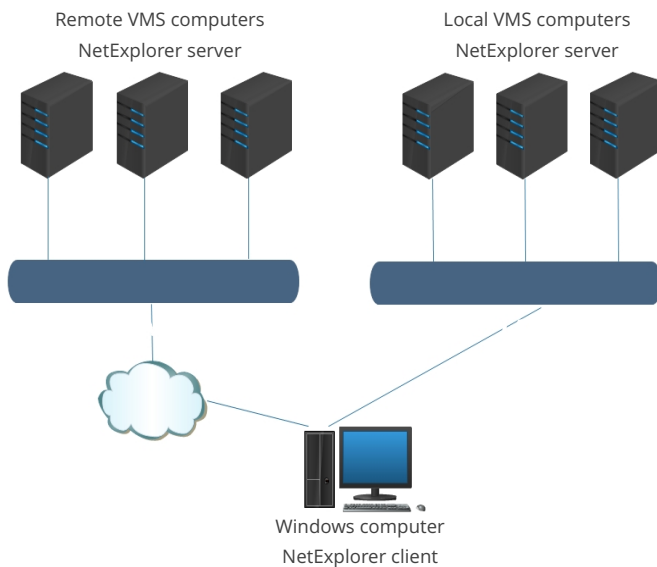


overview

NetExplorer allows a user to browse, monitor, and administer multiple OpenVMS systems from a single Windows computer, and to use Windows printers and tape drives to provide additional VMS printing and backup functions.



client/server architecture

The NetExplorer client runs on a Windows computer and provides connectivity to VMS computers via TCP/IP.

view nodes and devices

Device Name	Volume Label	Status	Total Bloc
APOLLO\$DKA0:	TEST	Mounted, ODS-2	8,3
APOLLO\$DKA100:	ALPHASYS	Mounted, ODS-2	8,3
APOLLO\$DKA200:	ATLAS	Mounted, ODS-2	17,9
APOLLO\$DKA300:	VMS83	Mounted, ODS-5	17,9
APOLLO\$DVA0:		Online	
DNFS0:		Template, Online, NFS	
DNFS1:	LINUXS/home/	Mounted, NFS, ODS-2	74,6
DNFS2:	LINUXS/home/	Mounted, NFS, ODS-2	615,3
DNFS3:	READY\$LIB1/	Mounted, NFS, ODS-2	1,555,8
APOLLO\$IDA0:		Template, Online	
EPSON\$PRINT		Idle	
LEXMARK\$PRINT		Idle	
SYSS\$BATCH		Idle	
SYSS\$PRINT		Idle	
APOLLO\$LMA2:			

copy a file

Copy and paste a file from one device to another, or to another node, or to a Windows disk.

store a file

Store a file on Windows and copy it back to VMS with all of its file characteristics intact.

compress a file

Compress a file and store it on VMS or Windows to save disk space.

store a backup saveset on a Windows tape drive

Copy a backup saveset directly from a VMS disk to and from a Windows tape drive.

edit a file

Use the full screen editor to modify VMS files.

execute a file

Execute a command file. The results will appear in a window which provides editing and printing to a Windows printer.

submit a file to a print or batch queue

One click of a mouse lets you submit a job to a batch queue or send it to a VMS printer. Monitor and control the queues.

use the toolbox

Use the toolbox to compare files, look at logical names, dump a file, find files or list savesets.

user-defined command files

Add your own command files to the list of user-defined command files. These files may be edited and/or executed directly from Windows. Print the results to a Windows printer.

for more information

netexplorer.compacdata.com

Compact Data Works, Inc.
9111 Cross Park Drive, Ste 200
Knoxville TN 37923
phone (800) 848-4329
email info@compacdata.com